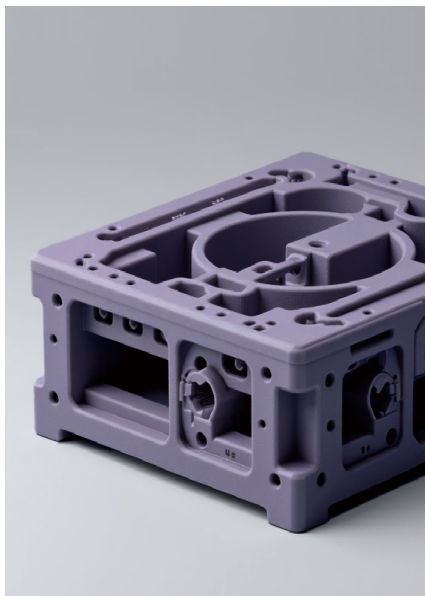


# G40-JG

- Enhanced heat resistant resin



## Keywords

- High resistant : 80°C
- Various Industrial usage
- JawsGray color, high performance

Color	Jaws Gray
Density(g/cm <sup>3</sup> )	1.2
Tensile Modulus	2700Mpa
Tensile Strength	56Mpa
Elongation Break	11%
Flexural Strength	76Mpa
Flexural Modulus	2700Mpa
HDT @ 1.8 MPa	80°C

## Characteristics

- Mock-up & Prototyping
- Moderate elongation
- Mass Productions
- Workability
- Impact resistance
- High detail and textured parts
- Cost-effective solutions
- Quick Production

[www.glucklab.com](http://www.glucklab.com)

The characteristics of these products may differ according to environments of 3D printer and specific factors in software, post processing conditions, product application, operating conditions, or with end use. Specifications subject to change without notice.  
© 2022 by Gluck, Inc. All rights reserved.

**GLUCK** 